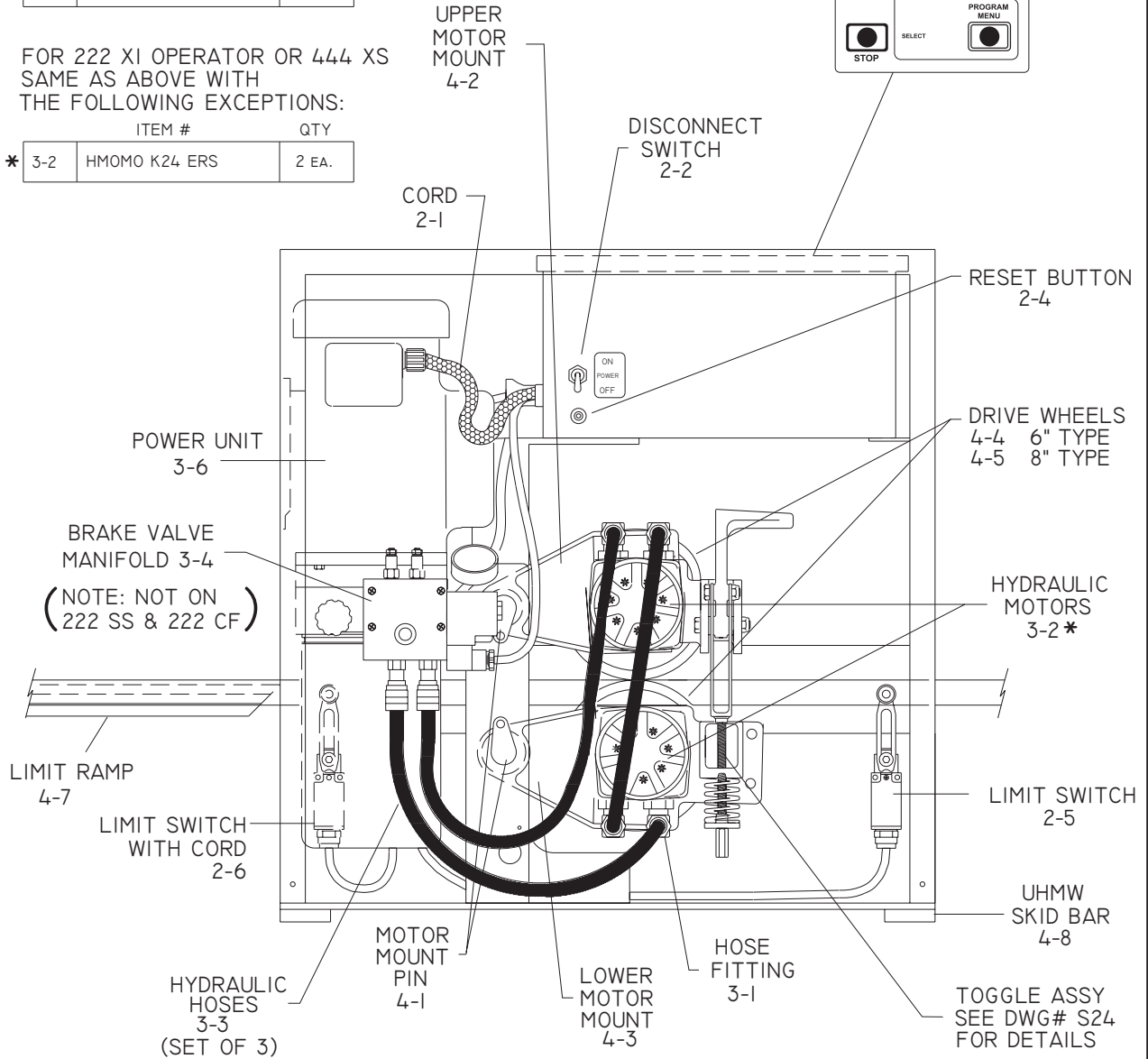
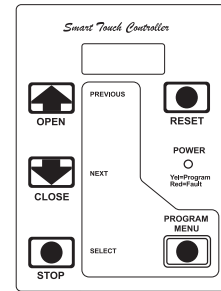


ITEM #	QTY	
2-1	ECOWI 144 0FLX	1 EA.
2-2	ESWDI 050 3P	1 EA.
2-3	ESR00038	1 EA.
2-4	ESR00039	1 EA.
2-5	ESWLS 224	1 EA.
2-6	ESWLS 224 ST	2 EA.
3-1	HSFFI 853 0610	4 EA.
3-2*	HMOMO K10 ERS	2 EA.
3-3	HSFHO 222K	3 EA.
3-4	HMAMA 222 BVK	1 EA.
4-1	M SLDU 012 SS	2 EA.
4-2	MSLDU 042 T	1 EA.
4-3	MSLDU 042 B	1 EA.
4-4	MSLDW 006 HY	2 EA.
4-5	MSLDW 008 HY	2 EA.
4-7	MSLLR 012 B	1 EA.

FOR 222 XI OPERATOR OR 444 XS
SAME AS ABOVE WITH
THE FOLLOWING EXCEPTIONS:

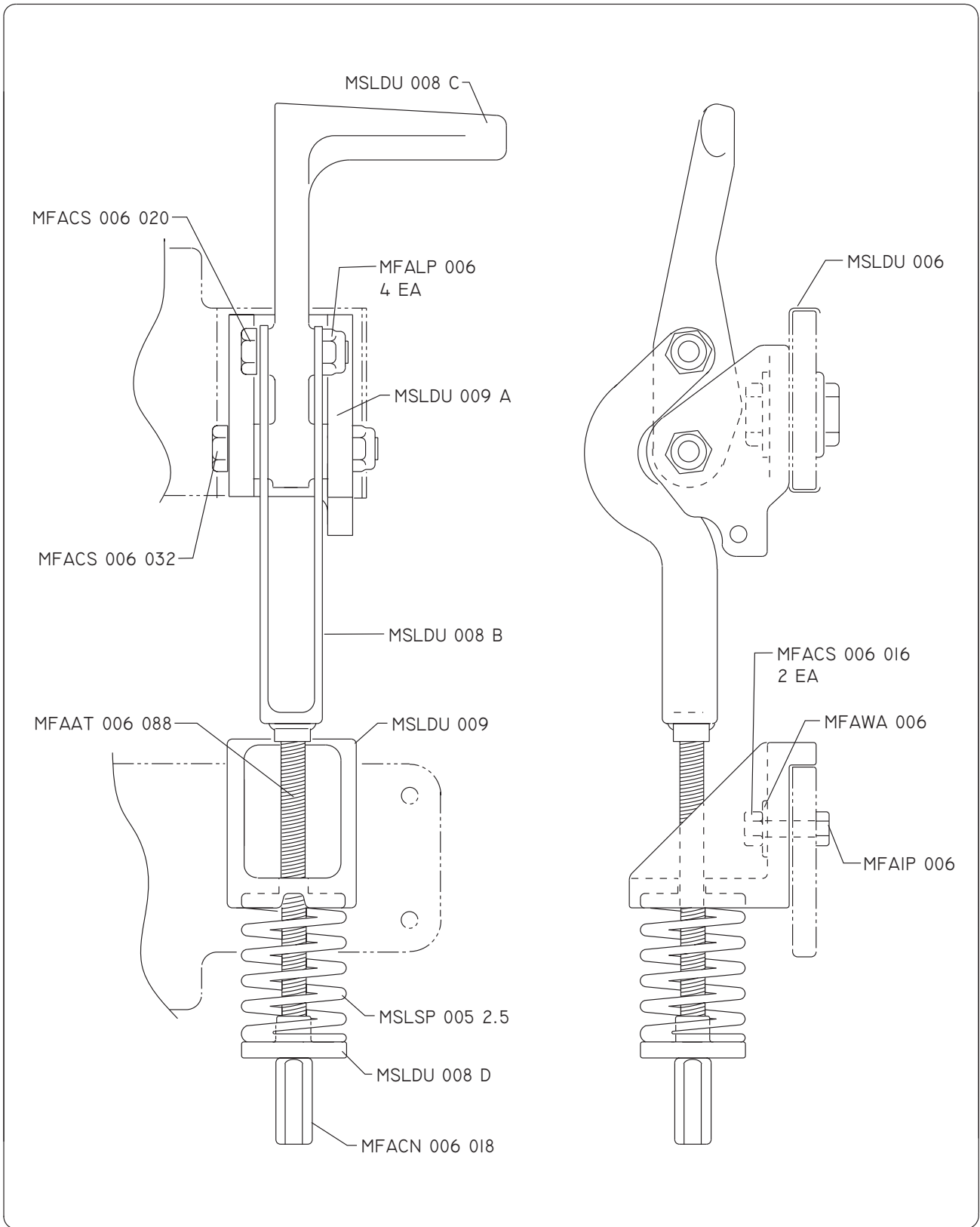
ITEM #	QTY	
* 3-2	HMOMO K24 ERS	2 EA.


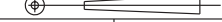
MEMBRANE SWITCH
2-3



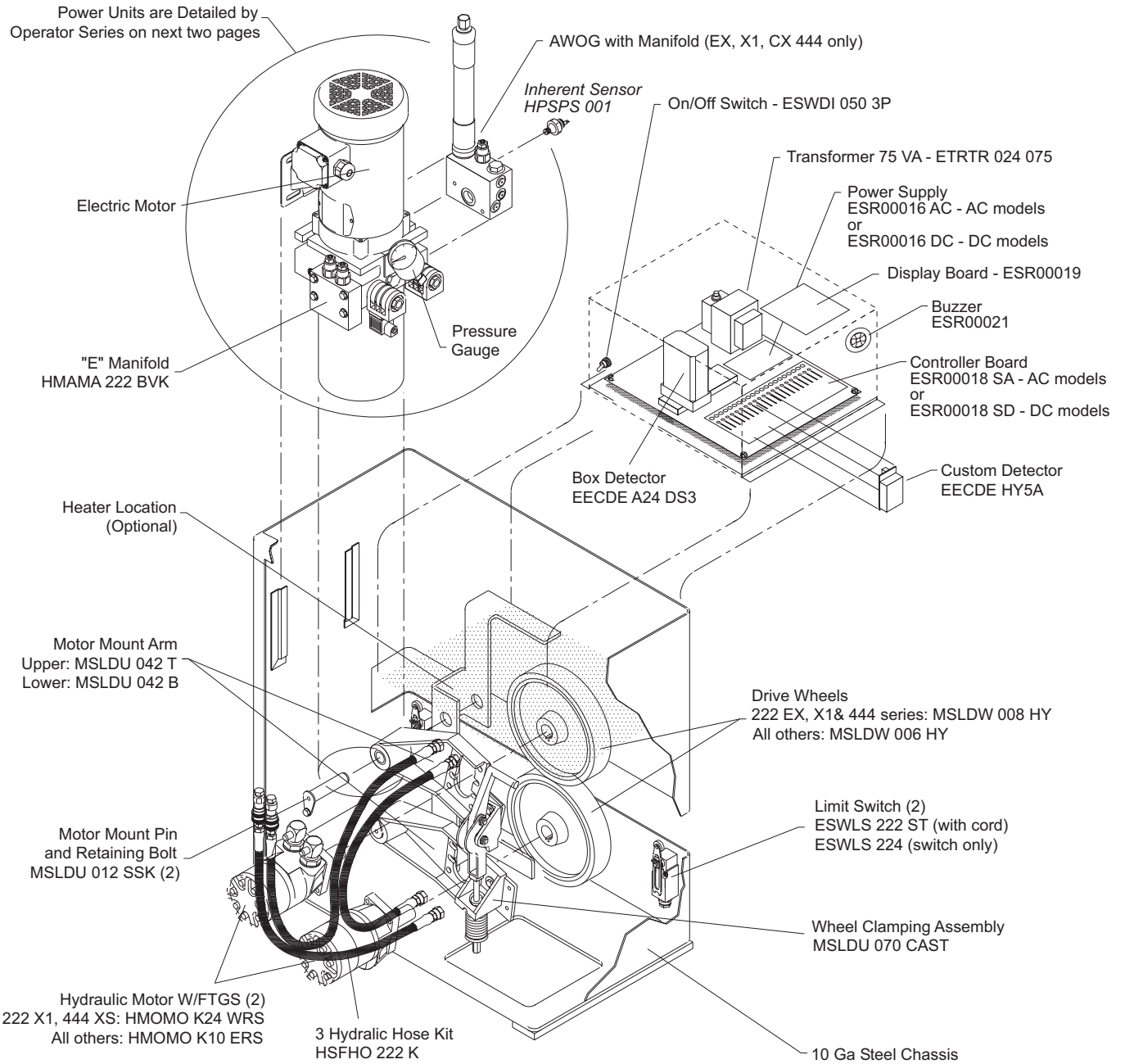
TITLE
COMPONENTS ALL A.C. SLIDE OPERATORS, EXCEPT III LS

DRAWN	DATE	THIRD ANGLE PROJECTION	REV
D.B.	6/26/0		
CHECKED	DATE	ERN NUMBER	DATE
APPROVED	DATE	DRAWING NUMBER:	
		SS34A	SHT 1 OF 1

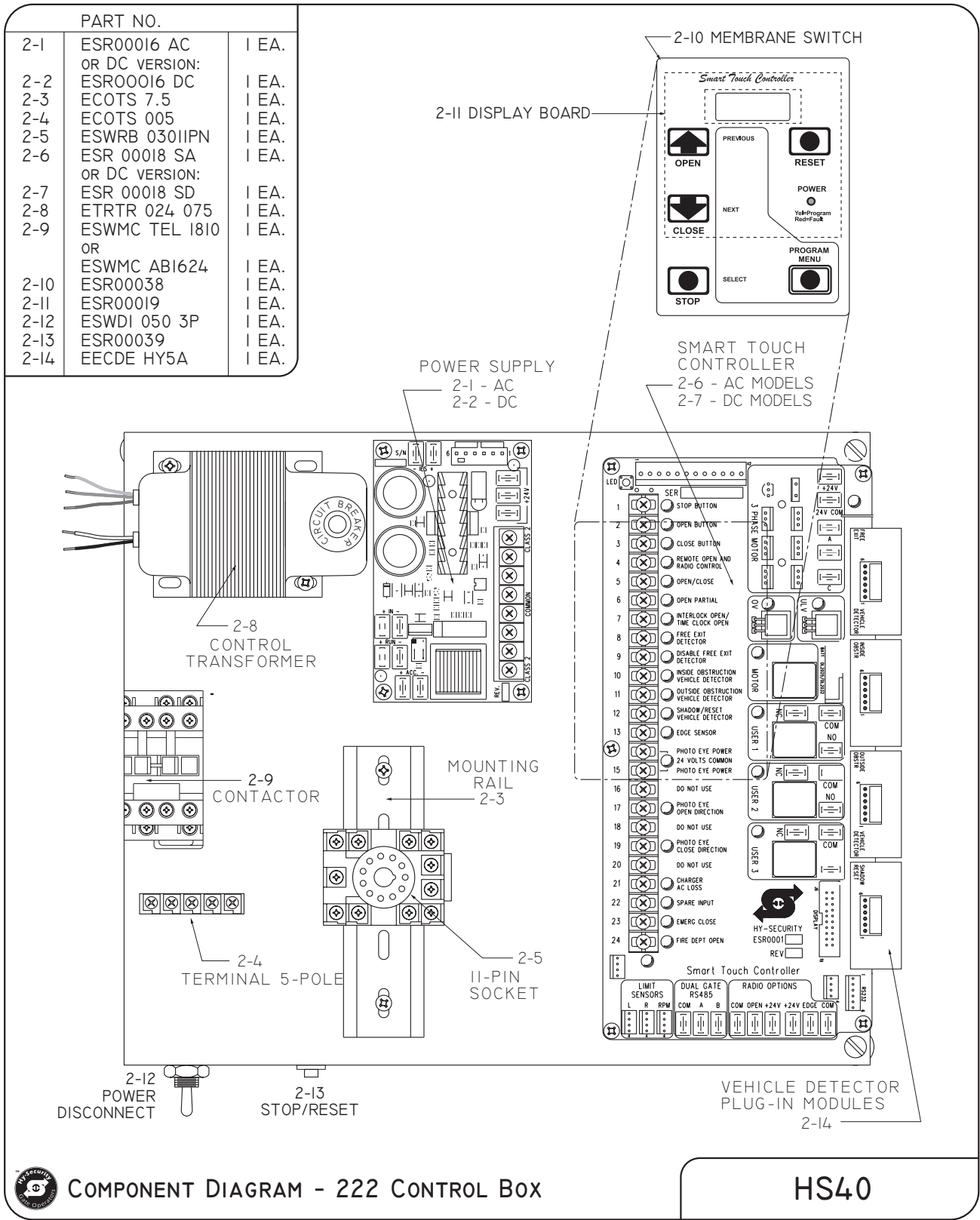


 <p>SEATTLE, WASHINGTON</p>	<p>TITLE</p> <p>COMPONENTS MANUAL RELEASE TOGGLE ASSEMBY FOR ALL SLIDE GATE OPERATORS</p>	<p>DRAWN</p> <p>D. B.</p>	<p>DATE</p> <p>05/12/00</p>	<p>THIRD ANGLE PROJECTION</p> 	<p>REV</p>	
		<p>CHECKED</p> <p>-</p>	<p>DATE</p> <p>-</p>	<p>ERN NUMBER</p> <p>-</p>	<p>DATE</p> <p>-</p>	<p>A</p>
		<p>APPROVED</p> <p>-</p>	<p>DATE</p> <p>-</p>	<p>DRAWING NUMBER:</p> <p>S24</p>		<p>SHT OF</p> <p>1 1</p>

Exploded Parts Breakout



Parts Breakout- Control Box



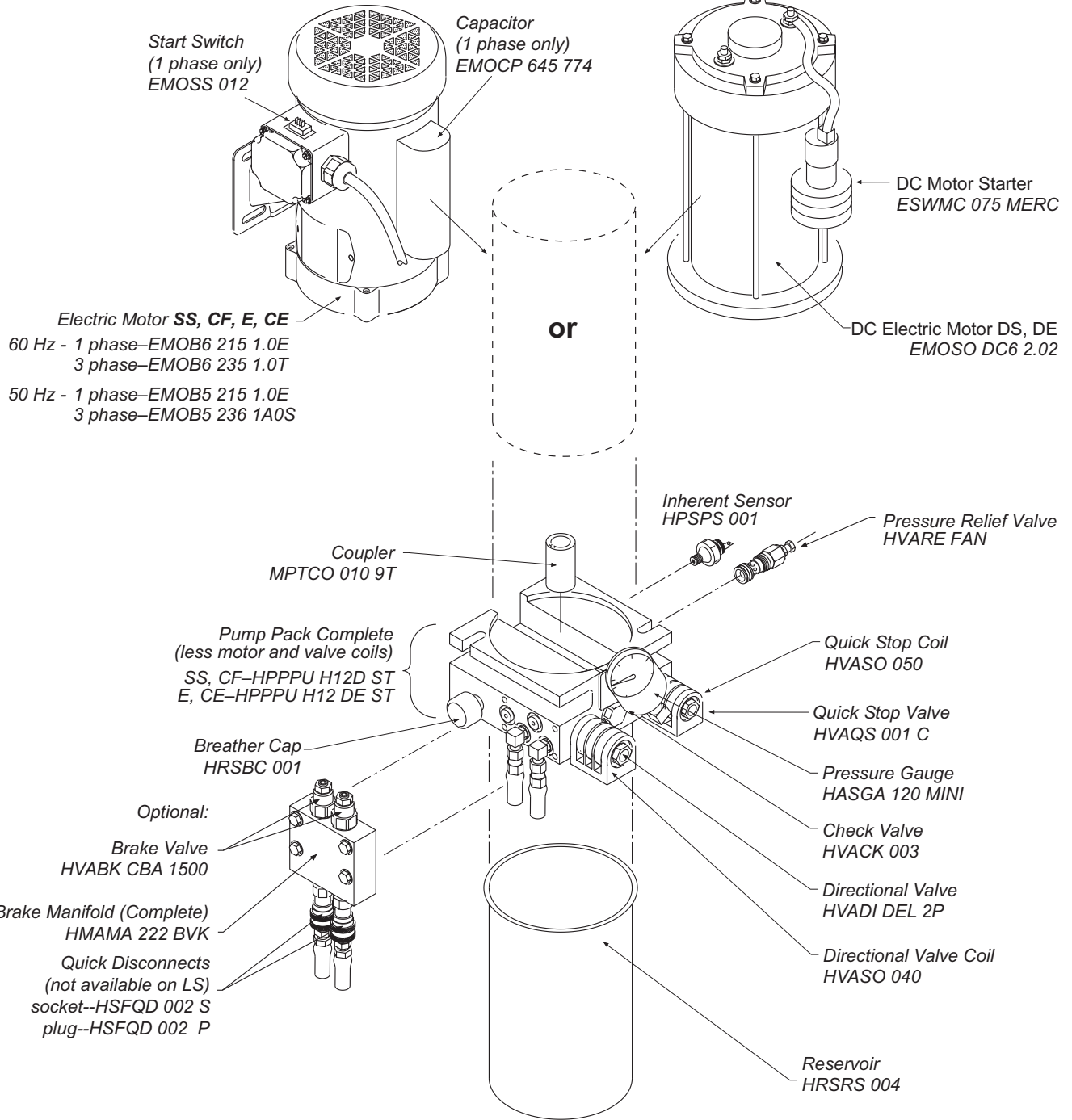
COMPONENT DIAGRAM - 222 CONTROL BOX

HS40

Exploded Parts Breakout

AC MOTOR

DC MOTOR



EX, CX, DX and 444 XS Models

